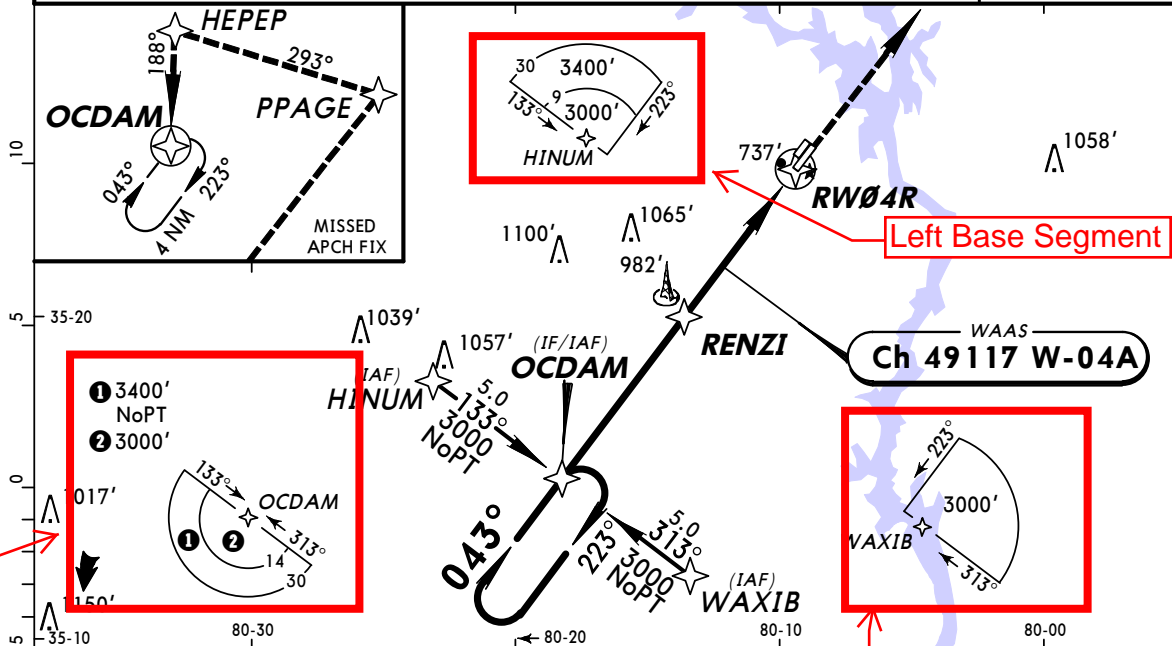


KVUJ
STANLY CO

JEPPESEN
28 MAY 10 (12-1) Eff 3 Jun

ALBEMARLE, N CAR
RNAV (GPS) Rwy 4R

AWOS-3 128.17		CHARLOTTE Approach (R) 128.32		*STANLY CO Tower CTAF 126.27		*Ground 121.75	
WAAS Ch 49117 W-04A		Final Apch Crs 043°		Minimum Alt RENZI 2500' (1891')		LPV DA(H) (CONDITIONAL) 876' (267')	
				Apt Elev 609'		TDZE 609'	
MISSED APCH: Climb to 3000' direct PPAGE and LEFT turn on track 293° to HEPEP and LEFT turn on track 188° to OCDAM and hold.							TAA 30 NM IAF
Alt Set: INCHES Trans level: FL 180 Trans alt: 18000' 1. Use local altimeter setting; if not received, use Asheboro Regl altimeter setting. 2. For uncompensated Baro-VNAV systems, LNAV/VNAV not authorized below -16°C (4°F) or above 47°C (116°F). 3. DME/DME RNP-0.30 not authorized. 4. Visibility reduction by helicopters not authorized. 5. Baro-VNAV not authorized when using Asheboro Regl altimeter setting. 6. VDP not authorized with Asheboro Regl altimeter setting. 7. Pilot controlled lighting 126.27.							



Straight In Segment

OCDAM 4 NM 043° → 223° 3000'		RENZI 2500'		RWY 4R 1.6 NM to RWY 4R TCH 39' TDZE 609'	
12.0	6.3	5.7	4.1	0.4	0.5

Gnd speed-Kts	70	90	100	120	140	160	REIL	3000'	PPAGE
Glide Path Angle	3.00°	372	478	531	637	743	PAPI-L	↑	
MAP at RWY 4R									

STRAIGHT-IN LANDING RWY 4R With Local Altimeter Setting					CIRCLE-TO-LAND Not Authorized at Night to Rwy 4L/22R	
	LPV DA(H) 876' (267')	LNAV/VNAV DA(H) 1030' (421')	LNAV MDA(H) 1160' (551')	Max Kts	With Local Altimeter Setting MDA(H)	
A			1	90	1260' (651')-1	
B	1	1½		120	1260' (651')-1¾	
C			1½	140	1260' (651')-2	
D			1¾	165	1260' (651')-2	
With Asheboro Regl Altimeter Setting					With Asheboro Regl Altimeter Setting	
	LPV DA(H) 929' (320')	LNAV/VNAV DA(H) 1083' (474')	LNAV MDA(H) 1220' (611')	Max Kts	MDA(H)	
A			1	90	1320' (711')-1	
B	1¼	1¾		120	1320' (711')-1¾	
C			1¾	140	1320' (711')-2	
D			2	165	1320' (711')-2½	

TERPS AMEND 0 3 JUN 2010