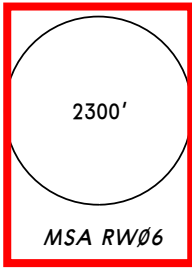


KLKR **JEPPESEN** **LANCASTER, S CAR**
LANCASTER CO-Mc WHIRTER 11 DEC 09 (12-1) **Eff 17 Dec** **RNAV (GPS) Rwy 6**

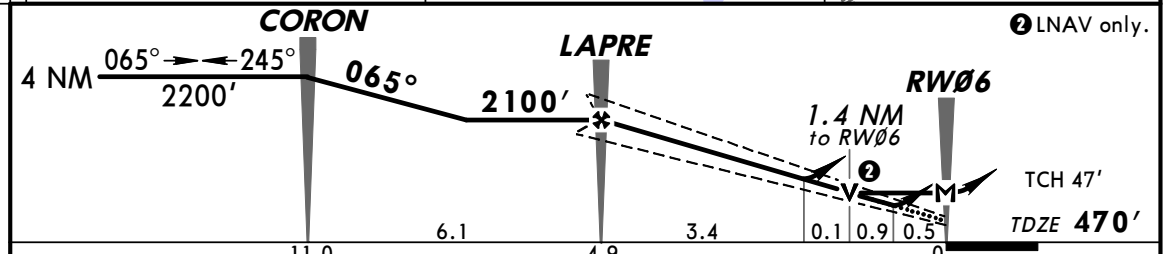
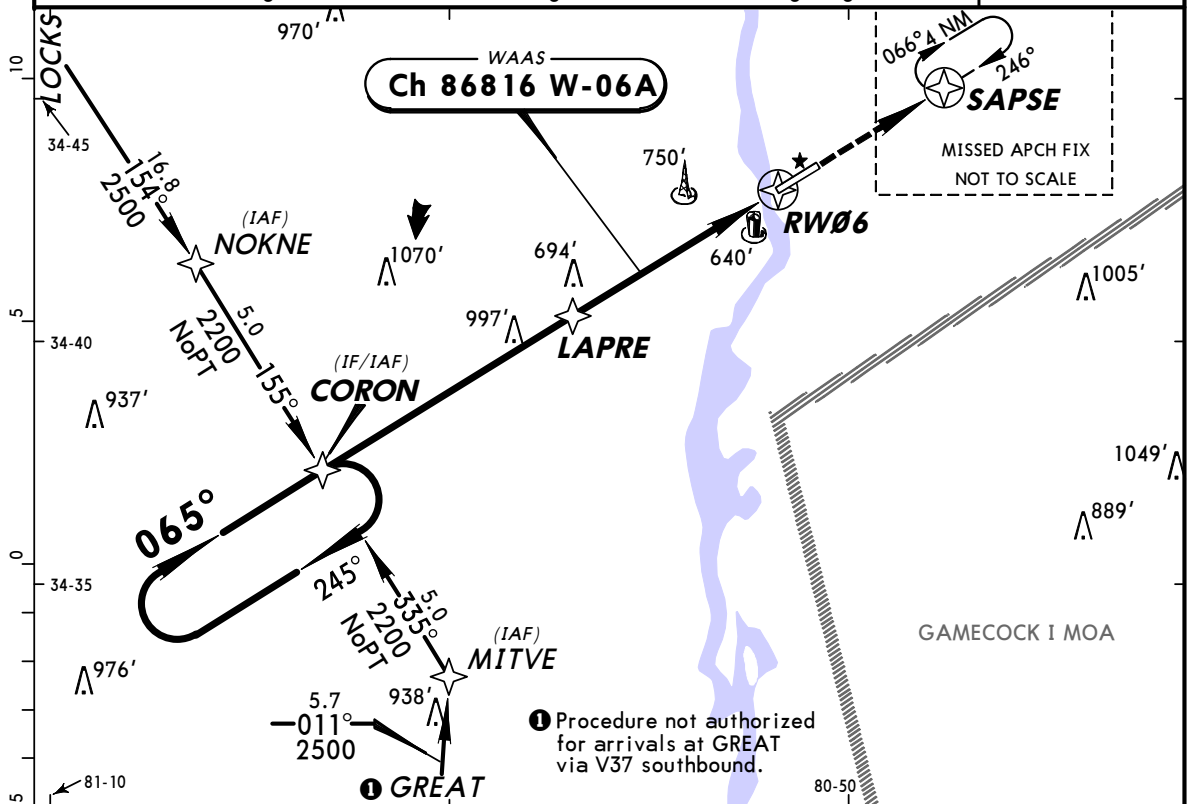
AWOS-3 120.82	CHARLOTTE Approach (R) 120.05	LANCASTER CO-Mc WHIRTER UNICOM CTAF 122.72
-------------------------	---	--

WAAS Ch 86816 W-06A	Final Apch Crs 065°	Minimum Alt LAPRE 2100' (1630')	LPV DA(H) (CONDITIONAL) 670' (200')	Apt Elev 486' TDZE 470'	
----------------------------------	----------------------------------	---	---	--	---

MISSED APCH: Climb to 2500' direct SAPSE and hold.

Alt Set: INCHES Trans level: FL 180 Trans alt: 18000'

1. Use local altimeter setting; if not received, use Rock Hill altimeter setting.
 2. Baro-VNAV not authorized when using Rock Hill altimeter setting.
 3. DME/DME RNP-0.30 not authorized. 4. For uncompensated Baro-VNAV systems, LNAV/VNAV not authorized below -15°C (5°F) or above 48°C (118°F). 5. VDP not authorized when using Rock Hill altimeter setting. 6. Pilot controlled lighting 122.72.



Gnd speed-Kts	70	90	100	120	140	160	PAPI-L	2500'	D	SAPSE
Glide Path Angle	3.00°	372	478	531	637	743				
MAP at RW06										

STRAIGHT-IN LANDING RWY 6			CIRCLE-TO-LAND	
① LPV	② LNAV/VNAV	③ LNAV	When VGSI inop, not authorized to Rwy 24 at night	
DA(H) 670' (200')	DA(H) 993' (523')	MDA(H) 940' (470')	With Local Altimeter Setting MDA(H)	With Rock Hill Altimeter Setting MDA(H)
A			Max Kts	
B		1	90	1040' (554')-1
C	3/4	1 1/4	120	1120' (634')-1
D	2	1 1/2	140	1060' (574')-1 1/2
			165	1140' (654')-1 3/4
				1080' (594')-2
				1160' (674')-2 1/4

① DA(H) 739' (269') with Rock Hill altimeter setting. ALL CATS: VIS 1
 ② DA(H) 1091' (621') with Rock Hill altimeter setting. ALL CATS: VIS 2 1/4
 ③ MDA(H) 1020' (550') with Rock Hill altimeter setting. CAT C: VIS 1 1/2, CAT D: VIS 1 3/4

TERPS AMEND 1 17 DEC 2009