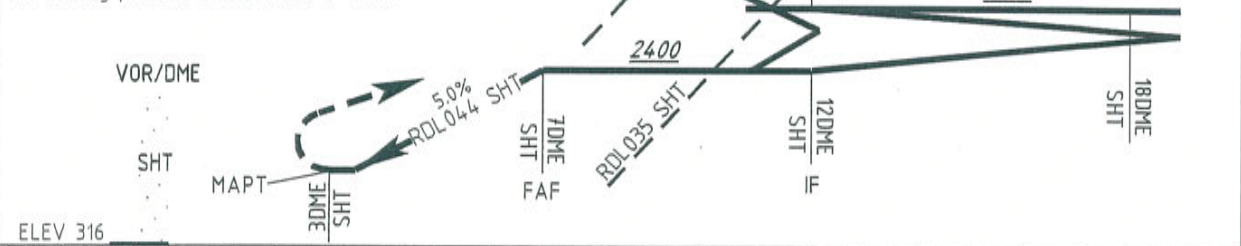


MISSED APPROACH
At RDL044 SHT/3DME Fix turn right climbing to track 077°, intercept and follow RDL032 SHT. At the RDL032 SHT/18DME Fix turn right to enter the holding pattern at 3000 (QNH) or above.



OCA/(H)	A	B	C	D
Straight-in Approach	1300/(984)	1300/(984)	1300/(984)	1300/(984)
Circling North West of RWY	1300/(924)	1400/(1024)	2400/(2024)	2600/(2224)

no circling in this area
circling only during daytime
See back Note 4

MAX IAS VISUAL MANOEUVRING
CAT C: 160KT
CAT D: 175KT

Note 1

Coordinates of fixes in WGS-84

FAF (RADIAL 044 SHT / 7 DME): 35° 17' 47.90" N, 026° 12' 46.93"E.

MAPt (RADIAL 044 SHT / 3 DME): 35° 15' 07.42" N, 026° 09' 08.20"E.

Secondary Holding Fix (RADIAL 032 SHT / 18 DME): 35° 27' 43" N, 026° 19' 22"E

Note 2

Coordinates of THR RWY 23 in WGS-84 : 35° 13' 19.52" N, 026° 06' 36.08"E.

Note 3

Table showing speed and time from FAF to MAPt.

G/S	NM/h	100	135	140	145	150	155	160	165	170	175	180	185
FAF – MAPt													
4NM	Min:s	2:24	1:47	1:43	1:39	1:36	1:33	1:30	1:27	1:25	1:22	1:20	1:18

Note 4

Caution in the following obstacles in Circling Area.

A. Obstacles in Circling CAT A Area.

<u>Obstacle type</u> <u>Elevation</u>	<u>Coordinates in WGS-84</u>	<u>Remarks</u>
Terrain 122m/400FT	35° 12' 22.63" N, 026° 05' 17.80" E	Penetrates the Approach Surface of RWY 05.
Terrain 127m/417FT	35° 12' 08.04" N, 026° 05' 02.78" E	Penetrates the Approach Surface of RWY 05.
Terrain 167m/548FT	35° 11' 17.68" N, 026° 04' 08.75" E	Penetrates the Inner Horizontal Surface.
Terrain 172m/564FT	35° 12' 31.59" N, 026° 03' 27.30" E	Penetrates the Inner Horizontal Surface.

B. Obstacles in Circling CAT B Area.

All the above obstacles plus the following.

<u>Obstacle type</u> <u>Elevation</u>	<u>Coordinates in WGS-84</u>	<u>Remarks</u>
Terrain 191m/627FT	35° 13' 28.51" N, 026° 03' 22.64" E	Penetrates the Inner Horizontal Surface.
Terrain 269m/882FT	35° 13' 01.47" N, 026° 02' 26.97" E	Penetrates the Conical Surface.
Terrain 281m/922FT	35° 12' 56.74" N, 026° 02' 22.69" E	Penetrates the Conical Surface.
Terrain 244m/800FT	35° 11' 18.42" N, 026° 03' 03.43" E	Penetrates the Approach Surface of RWY 05 and the Conical Surface.

C. Obstacles in Circling CAT C Area.

All the above obstacles plus the following.

<u>Obstacle type</u> <u>Elevation</u>	<u>Coordinates in WGS-84</u>	<u>Remarks</u>
Terrain 386m/1266FT	35° 12' 02.37" N, 026° 01' 34.20" E	Penetrates the Conical Surface.
Terrain 291m/955FT	35° 10' 23.27" N, 026° 02' 03.95" E	Penetrates the Horizontal Surface of 150m above THR 05.
Terrain 400m/1312FT	35° 10' 34.26" N, 026° 01' 20.64" E	Penetrates the Approach Surface of RWY 05 and the Horizontal Surface of 150m above THR 05.
Terrain 452m/1483FT	35° 10' 38.23" N, 026° 01' 15.54" E	Penetrates the Horizontal Surface of 150m above THR 05.
Terrain 557m/1827FT	35° 11' 20.20" N, 026° 00' 52.48" E	Penetrates the Horizontal Surface of 150m above THR 05.
Terrain 444m/1456FT	35° 11' 43.13" N, 026° 01' 18.08" E	Penetrates the Horizontal Surface of 150m above THR 05.
Terrain 472m/1548FT	35° 11' 40.33" N, 026° 00' 48.90" E	Penetrates the Horizontal Surface of 150m above THR 05.
Terrain 429m/1407FT	35° 12' 47.77" N, 026° 00' 53.64" E	Penetrates the Horizontal Surface of 150m above THR 05.
Terrain 452m/1483FT	35° 11' 48.37" N, 026° 00' 33.24" E	Penetrates the Horizontal Surface of 150m above THR 05.

D. Obstacles in Circling CAT D Area.

All the above obstacles plus the following.

<u>Obstacle type</u> <u>Elevation</u>	<u>Coordinates in WGS-84</u>	<u>Remarks</u>
Terrain 613m/2011FT	35° 09' 43.47" N, 026° 00' 36.60" E	Penetrates the Approach Surface of RWY 05 and the Horizontal Surface of 150m above THR 05.
Terrain 530m/1738FT	35° 10' 13.04" N, 026° 00' 38.06" E	Penetrates the Approach Surface of RWY 05 and the Horizontal Surface of 150m above THR 05.
Terrain 614m/2014FT (3 Antennas)	35° 10' 57.29" N, 026° 00' 30.05" E	Penetrates the Horizontal Surface of 150m above THR 05.