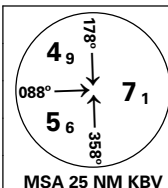


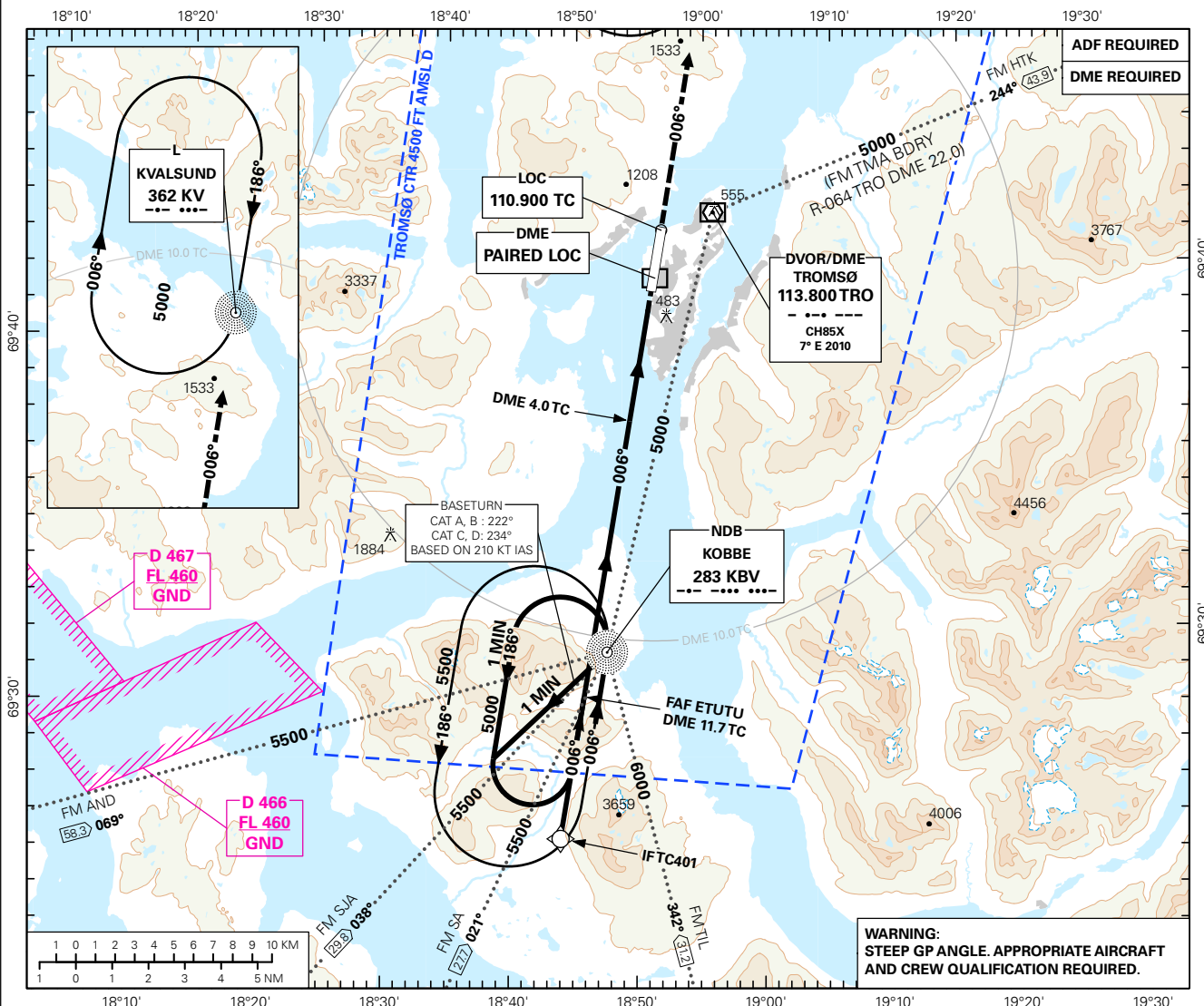
INSTRUMENT APPROACH CHART - ICAO PLAN VIEW SCALE: 1:350 000

**TROMSØ
LANGNES
ILS RWY 01**

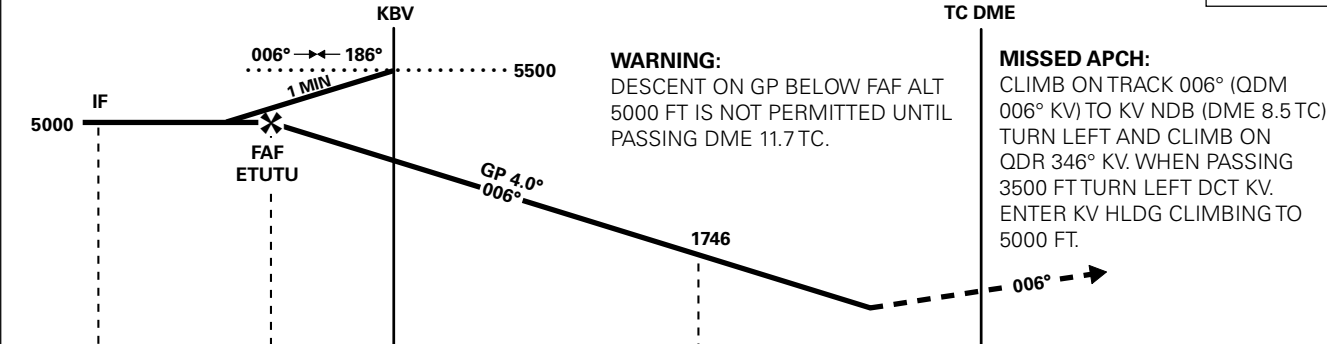


ATIS:	126.125	AERODROME ELEVATION: 32 FT	
APP:	123.750	THR ELEVATION: 27 FT	DIST IN NM
TWR:	118.300 (122.100)	HGT RELATED TO THR RWY 01 ELEV, ALT AND HGT IN FT	
VDF:	123.750	CIRCLING HGT RELATED TO AD ELEV	
BEARINGS ARE MAGNETIC - VAR 7.1 ° E (2010)			

TRANSITION ALTITUDE
7000



DIST FM DME	11	10	9	8	7	6	5	4	3
ALT (HGT)	4812 (4785)	4369 (4342)	3927 (3900)	3488 (3461)	3050 (3023)	2614 (2587)	2179 (2152)	1746 (1719)	1316 (1289)
ILS RDH 49									



15.66	11.7	10.4	4.0	0	
15.55	11.6	10.3	3.9	0	

CAT OF ACFT	A	B	C	D	FINAL APPROACH							
						SPEED	KT	70	100	120	150	180
STRAIGHT - IN	CAT I: 2.5 %*	764 (737)	784 (757)	798 (771)	815 (788)	TIME	MIN:SEC	-	-	-	-	-
	CAT I: 3.0 %*	684 (657)	704 (677)	718 (691)	734 (707)							
	CAT I: 4.0 %*	352 (325)	372 (345)	385 (358)	402 (375)							
CIRCLING		840 (808)	850 (818)	2660(2628)	2960 (2928)	ROD	FT/MIN	495	710	850	1060	1275

NOTE: CIRCLING EAST OF AD ONLY. *MINIMUM MISSED APCH CLIMB GRADIENT.

CHANGES: MAGNETIC VARIATION (2010), TC401, ETUTU FAF.