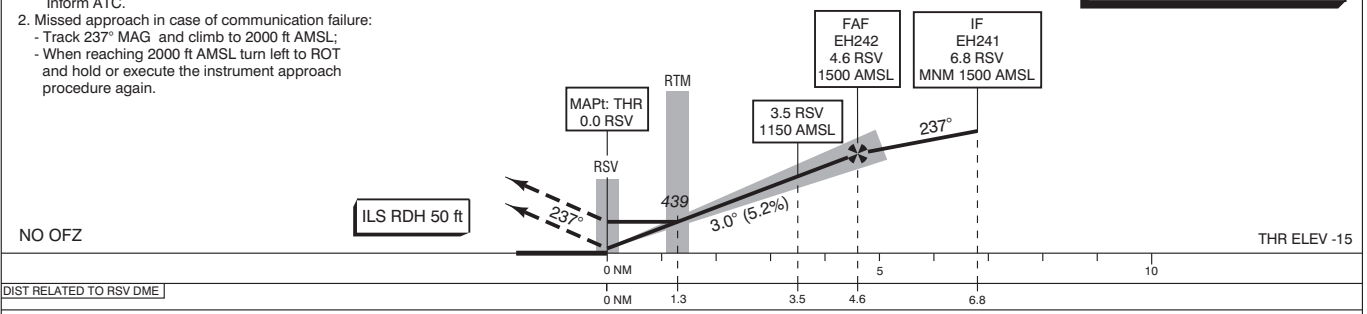


- Missed approach:
- Track 237° MAG and climb to 2000 ft AMSL.
Inform ATC.
- Missed approach in case of communication failure:
- Track 237° MAG and climb to 2000 ft AMSL;
- When reaching 2000 ft AMSL turn left to ROT and hold or execute the instrument approach procedure again.

DO NOT DESCEND BELOW THE DESCENT PROFILE

**TRANSITION LEVEL BY ATC
TRANSITION ALTITUDE 3000 ft AMSL**



| GS IN KT | 60 | 80 | 100 | 120 | 140 | 160 | 180 |
|---------------------------------|------------|---------------|------------|--|------------------------------|------------------------------|------------|
| VERTICAL SPEED | 320 ft/min | 425 ft/min | 530 ft/min | 635 ft/min | 745 ft/min | 850 ft/min | 955 ft/min |
| OCA (OCH) ELEV THR 24: -14.6 ft | | | | | | | |
| ACFT CAT | CAT I | LOC MAPt: THR | CIRCLING* | * Circling SE of RWY 06/24 is prohibited (see CAUTION). | | MSA BASED ON RTM VOR/DME | |
| A | 133 (147) | 430 (450) | 440 (460) | THR 24 51°57'43"N 004°27'10"E | EH241 52°01'24"N 004°36'24"E | EH242 52°00'12"N 004°33'25"E | |
| B | 144 (158) | | 520 (530) | | | | |
| C | 154 (168) | | 730 (740) | | | | |
| D | 166 (180) | | 760 (770) | | | | |
| CEILING AND VISIBILITY MINIMA | | | | BEARINGS ARE MAGNETIC DISTANCES IN NM ALTITUDES AND ELEVATIONS IN FEET | | | |
| TAKE-OFF | DAY: | NA | NIGHT: | NA | | | |
| LANDING | DAY: | NA | | NA | | | |