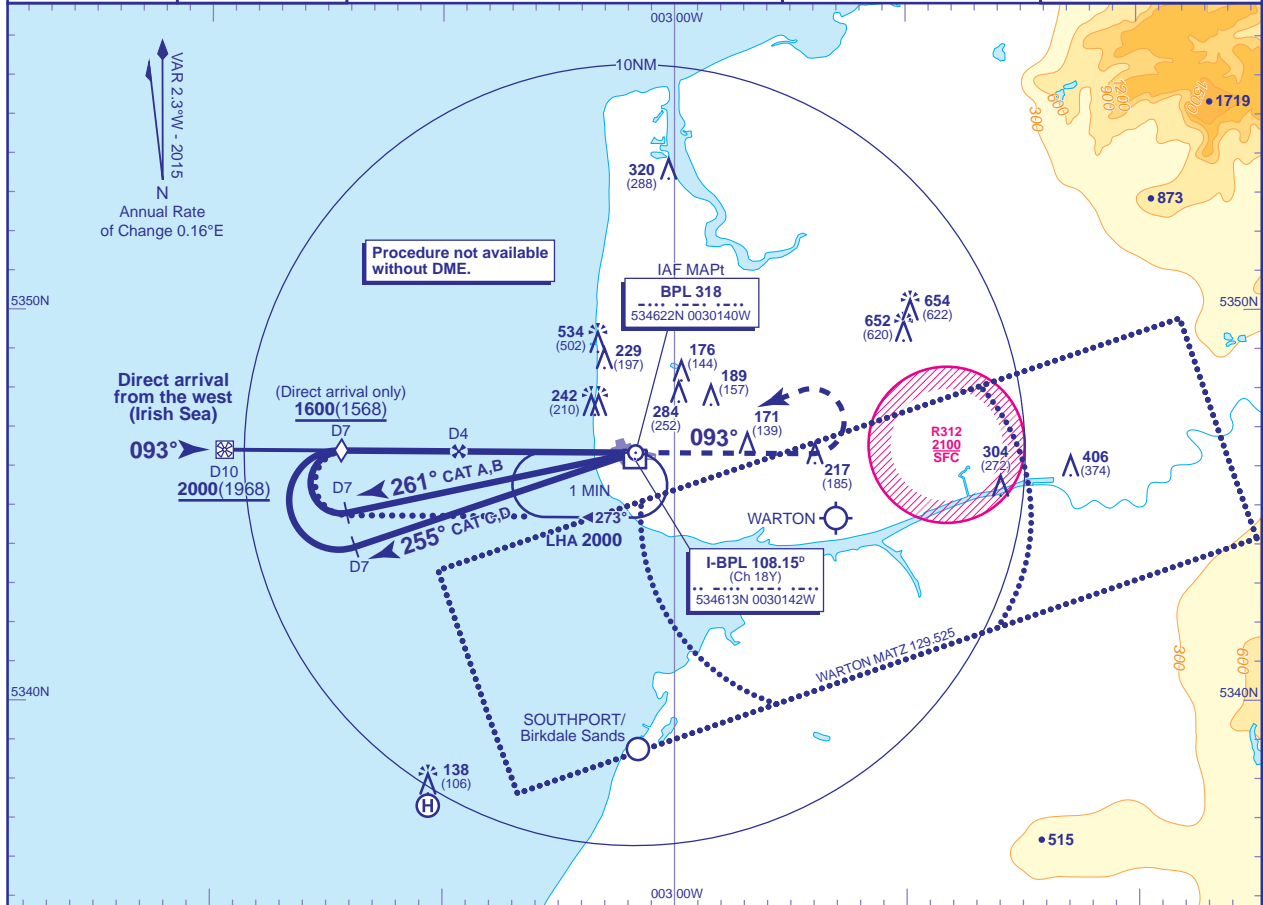


INSTRUMENT APPROACH CHART - ICAO

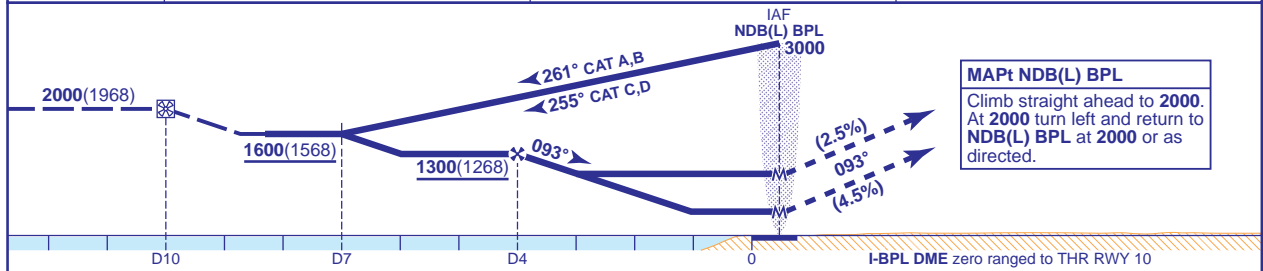
**BLACKPOOL**  
**NDB(L)/DME**  
**RWY 10**  
(ACFT CAT A,B,C,D)

 <p>MSA 10NM NDB(L) BPL</p>	 <p>MSA 25NM NDB(L) BPL</p>	APP 119.950	BLACKPOOL APPROACH	AD ELEVATION	34
		TWR 119.950	BLACKPOOL TOWER	THR ELEVATION	32
		ATIS 127.200	BLACKPOOL INFORMATION	OBSTACLE ELEVATION	654 AMSL (622) (ABOVE THR)
				BEARINGS ARE MAGNETIC	TRANSITION ALTITUDE 3000



RECOMMENDED PROFILE Gradient 5%, 300FT/NM

DME I-BPL	4	3	2
ALT(HGT)	1300(1268)	1000(968)	700(668)



Aircraft Category	Climb Gradients	A	B	C	D	Rate of descent	G/S KT				
		4.5%	3.5%	3.0%	2.5%		160	140	120	100	80
OCA(OCH) Climb Gradients	4.5%	410(378)	410(378)	410(378)	410(378)		860	750	640	540	430
	3.5%	700(668)	700(668)	700(668)	700(668)						
	3.0%	850(818)	850(818)	850(818)	850(818)						
	2.5%	1000(968)	1000(968)	1000(968)	1000(968)						
VM(C)OCA (OCH AAL)	Total Area	580(546)	830(796)	930(896)	930(896)						
	South of RWY 10/28	440(406)	470(436)	590(556)	620(586)						

**ALTERNATIVE PROCEDURE EXTENDED HOLDING PATTERN**  
From the NDB(L) BPL holding pattern at 3000 extend the outbound leg, descending to **not below 1600(1568)**. At I-BPL DME 7 turn right, continuing descent as required, to establish on the extended FAT. When established continue as for main procedure.

**DIRECT ARRIVAL FROM THE WEST (IRISH SEA)**  
When cleared by ATC, before I-BPL DME 15 inbound, fly DR track to intercept extended FAT (QDM 093°) at I-BPL DME 10 (IAF). Fly extended FAT inbound to cross I-BPL DME 7 **not below 1600(1568)**. Descend to cross I-BPL DME 4 (FAF) **not below 1300(1268)** then continue as for main procedure.

- NOTE 1** FAT offset 3.7° south of RWY C/L.  
**2** Lowest altitude to commence procedure from holding or missed approach is **2000**.  
**3** Aircraft not permitted below **1670** over EG R312 for the purpose of landing at Blackpool.

**CHANGE (12/15):** COM FREQUENCIES.  
AERO INFO DATE 13 AUG 15