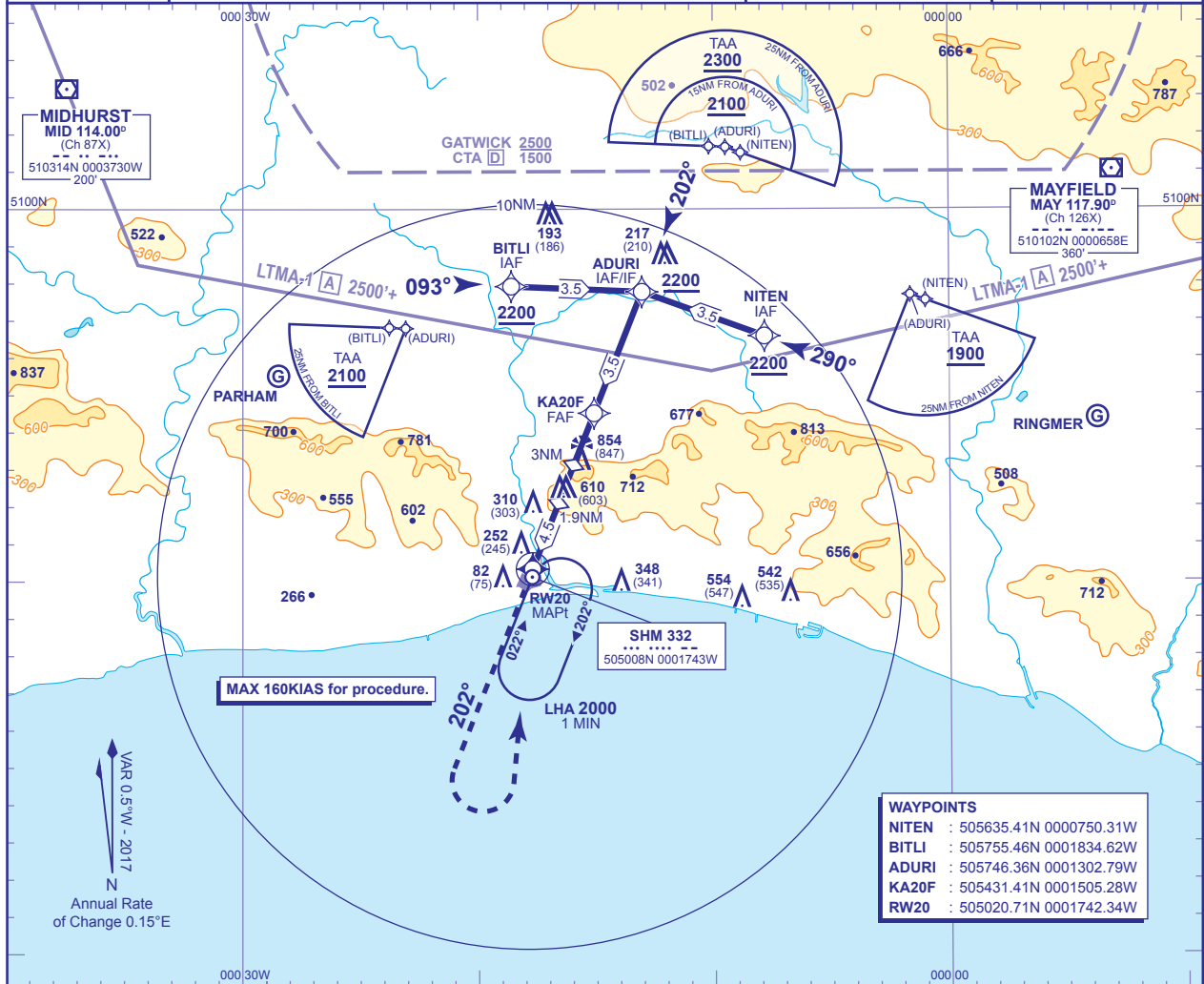


**INSTRUMENT APPROACH CHART - ICAO**

**SHOREHAM  
RNAV (GNSS)  
RWY 20  
(ACFT CAT A,B)**

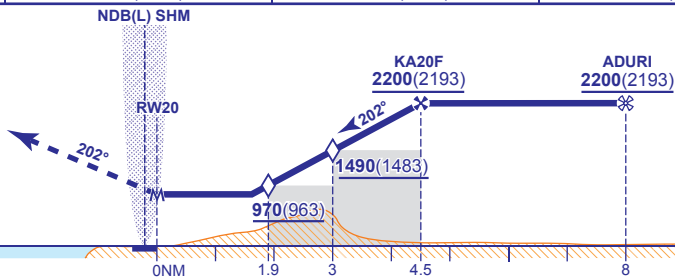
<p>2100 MSA 25NM ARP</p>	APP 123.150	SHOREHAM APPROACH	AD ELEVATION 7
	A/G 123.150	SHOREHAM RADIO	THR ELEVATION 7
	TWR 123.150, 125.400	SHOREHAM TOWER	OBSTACLE ELEVATION 854 AMSL (847) (ABOVE THR)
	ATIS 130.975	SHOREHAM INFORMATION	BEARINGS ARE MAGNETIC
			TRANSITION ALTITUDE 6000



RECOMMENDED PROFILE Gradient 7.83%, 476FT/NM

NM to MAPt (RW20)	4	3 (SDF)	2	1.9 (SDF)
ALT(HGT)	1970(1963)	1490(1483)	1010(1003)	970(963)

**MAPt (RW20) (THR RWY 20)**  
Climb straight ahead to 1500, then climbing turn left to NDB(L) SHM at 2200, or as directed.



Aircraft Category		Aircraft Category		Rate of descent	G/S KT	160	140	120	100	80
		A	B							
Procedure OCA(OCH)	LNAV	800(793)	800(793)	FT/MIN	1280	1120	960	800	640	
		VM(C)OCA (OCH AAL)	Total Area		800(793)	1000(993)				
		South of RWY 06/24	600(593)	800(793)						

**NOTE** 1 Steep final approach descent gradient 7.83% matched to PAPI angle 4.5°.  
 2 Missed approach procedure uses conventional navigation aids and is not available without NDB(L) SHM.  
 3 Direct entry only to BITLI and NITEN, aircraft to remain clear of Gatwick CTA.  
 4 Direct entry to ADURI (IAF/IF) from the north, only available to aircraft in receipt of a CTR/CTA transit from Gatwick ATC.  
 5 Pilots are advised that this instrument approach procedure is established outside controlled airspace.  
**CHANGE (10/16):** MAG VAR. ANNUAL RATE OF CHANGE. RWY DESIGNATOR 07/25 TO 06/24. MID/MAY RADIALS WITHDRAWN. TRACKS/RADIALS. OBSTACLES.

AERO INFO DATE 6 JUL 16