

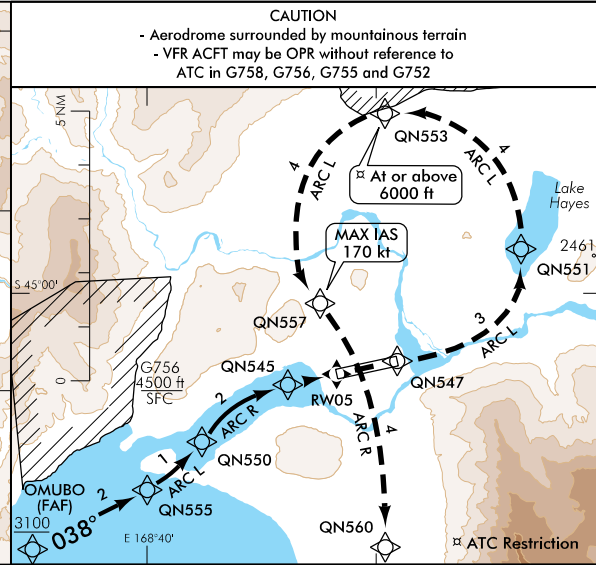
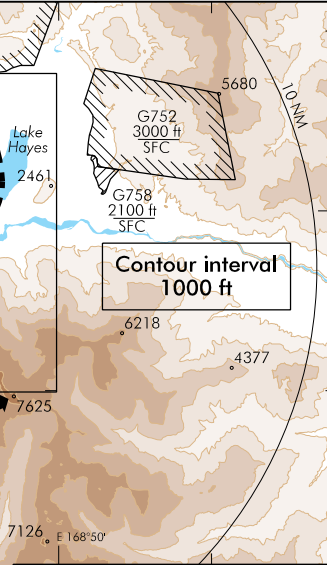
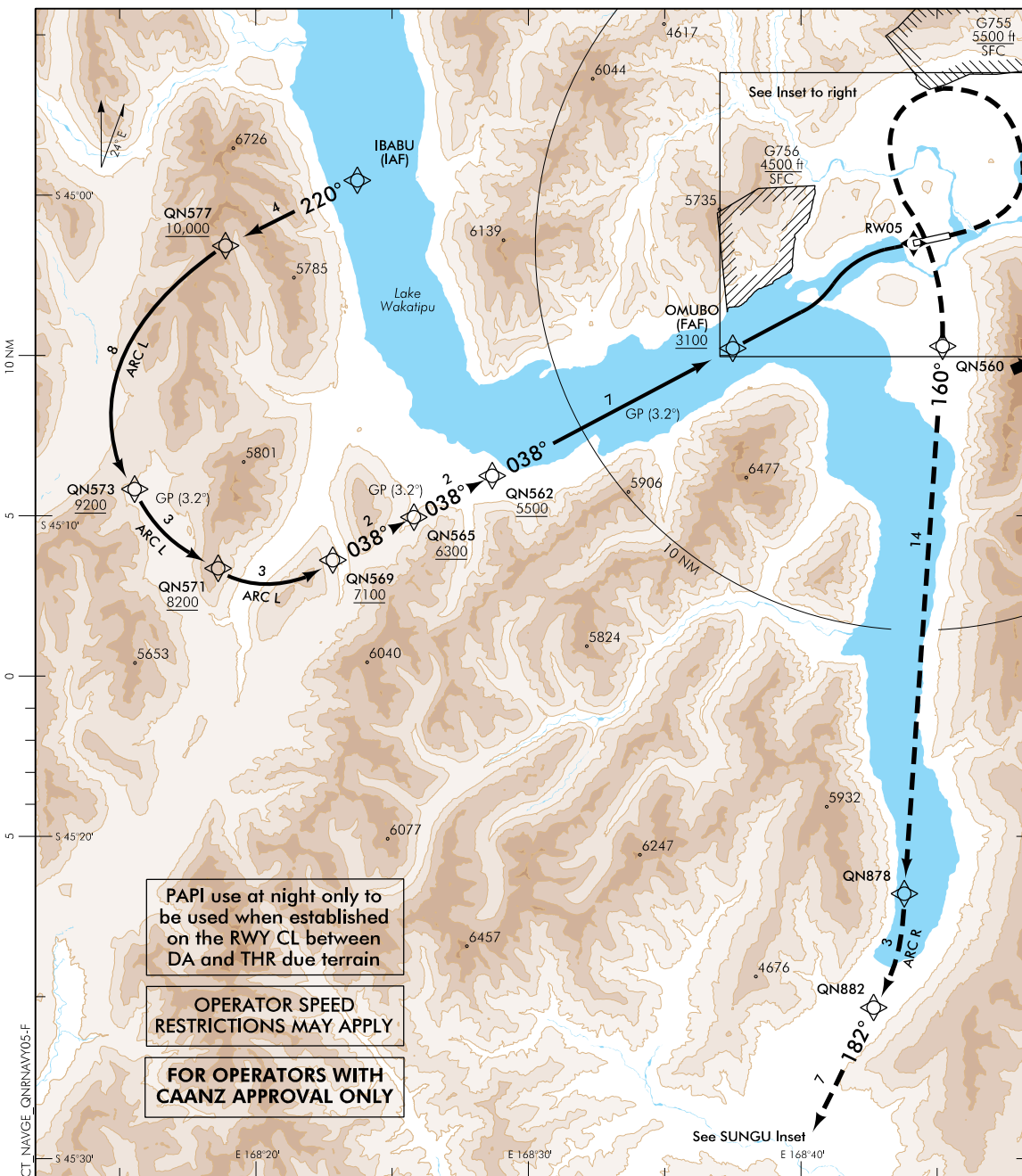
ELEV 1171
 RWY 05 THR ELEV 1160
 TOWER: 118.1 128.9

CAT C,D

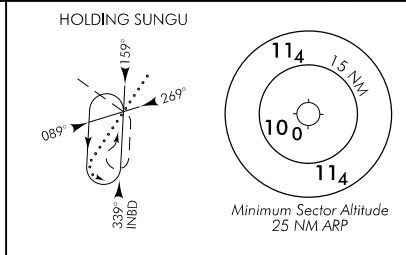
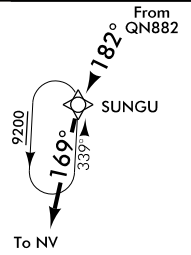
QUEENSTOWN
RNAV (RNP) Y RWY 05

APPROACH: 125.75 ATIS: 126.4 UNATTENDED: 118.1

CAUTION
 - Aerodrome surrounded by mountainous terrain
 - VFR ACFT may be OPR without reference to ATC in G758, G756, G755 and G752



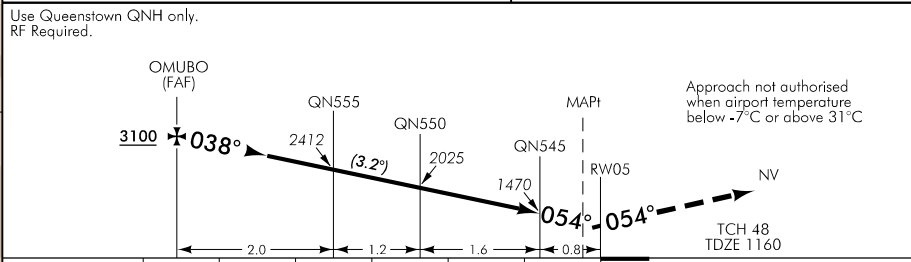
- NOTES:**
- MNM altitude 9200 ft
 - MNM CTA containment altitude 10,000 ft
 - MAX holding speed 240 kt IAS
 - If unable to reach 9200 ft by SUNGU, climb to 9800 ft via the RNAV (RNP) missed approach track to NV.



PAPI use at night only to be used when established on the RWY CL between DA and THR due terrain

OPERATOR SPEED RESTRICTIONS MAY APPLY

FOR OPERATORS WITH CAANZ APPROVAL ONLY



MISSED APCH: Climb to 10,000 ft via the RNAV (RNP) missed approach track to NV. Hold SUNGU 10,000 ft. Missed approach not fully contained in controlled airspace if unable to cross QN553 6000 ft or above.

Category	A	B	C	D
RNP 0.15	NA		1438(278) – 1300	
RNP 0.18			1625(465) – 2300	
RNP 0.30			2229(1069) – 5.6	

Minima figures are indicative only. See CAANZ RNP-AR operator approval for specific procedure minima.

Effective: 10 NOV 16

Changes from 21 JUL 16: G752/G758/G755 airspace updated, SUNGU hold INBD track, missed approach text, profile crossing altitudes.

ELEV 1171

CAT C,D

QUEENSTOWN

RWY 23 THR ELEV 1171

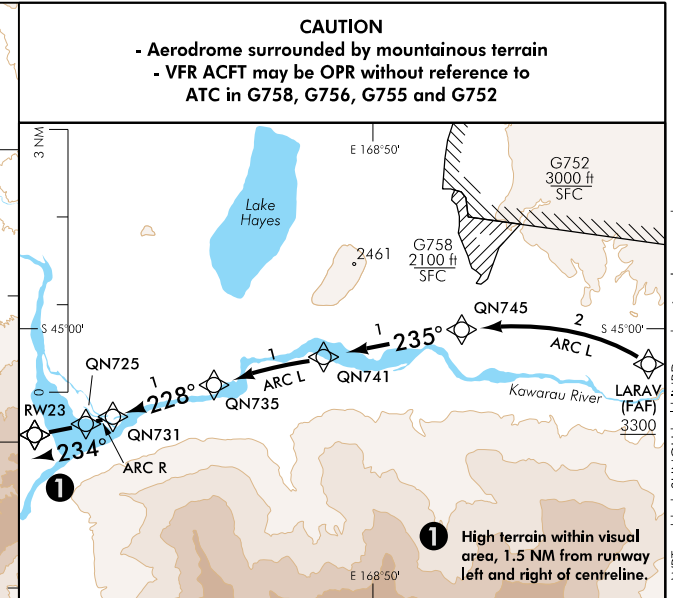
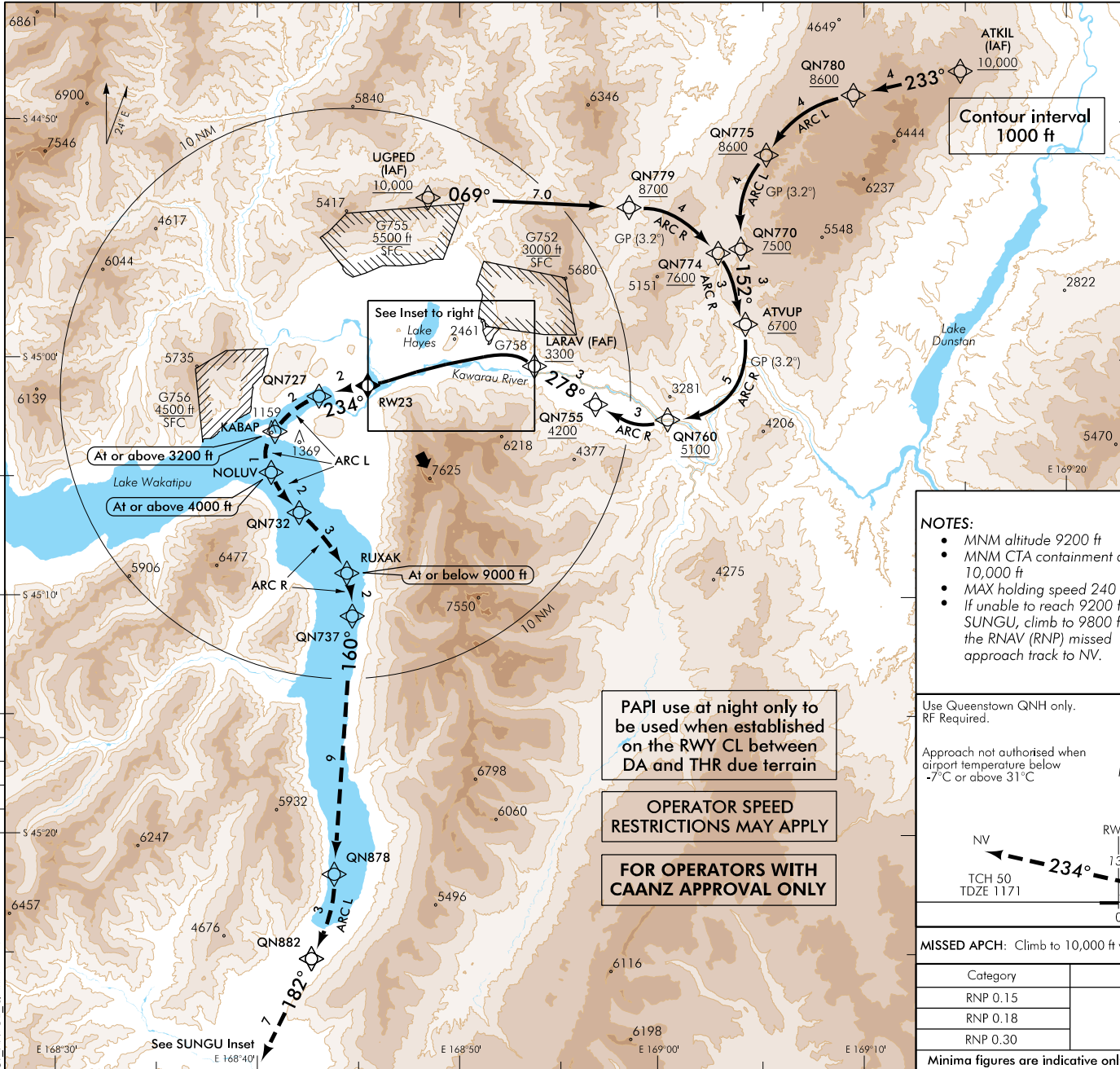
RNAV (RNP) Y RWY 23

TOWER: 118.1 128.9

APPROACH: 125.75

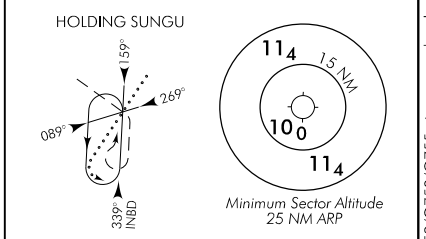
ATIS: 126.4

UNATTENDED: 118.1



NOTES:

- MNM altitude 9200 ft
- MNM CTA containment altitude 10,000 ft
- MAX holding speed 240 kt IAS
- If unable to reach 9200 ft by SINGU, climb to 9800 ft via the RNAV (RNP) missed approach track to NV.



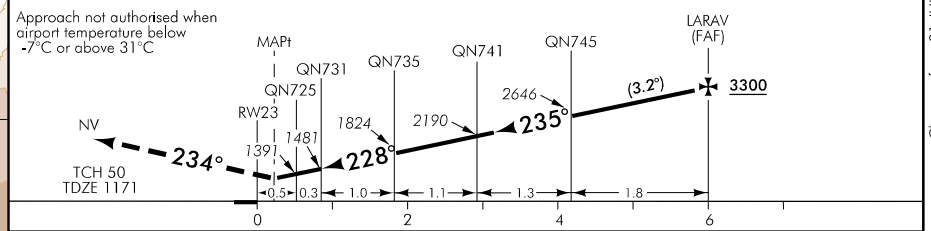
PAPI use at night only to be used when established on the RWY CL between DA and THR due terrain

OPERATOR SPEED RESTRICTIONS MAY APPLY

FOR OPERATORS WITH CAANZ APPROVAL ONLY

Use Queenstown QNH only. RF Required.

Approach not authorised when airport temperature below -7°C or above 31°C



MISSED APCH: Climb to 10,000 ft via the RNAV (RNP) missed approach track to NV. Hold SINGU 10,000 ft.

Category	A	B	C	D
RNP 0.15	NA		1875(704) – 3600	
RNP 0.18			2003(832) – 4300	
RNP 0.30			2623(1452) – 7.7	

Minima figures are indicative only. See CAANZ RNP-AR operator approval for specific procedure minima.

Effective: 10 NOV 16

Changes from 21 JUL 16: G752/G758/G755 airspace updated, new WP's added, SINGU hold INBD track, missed approach text.