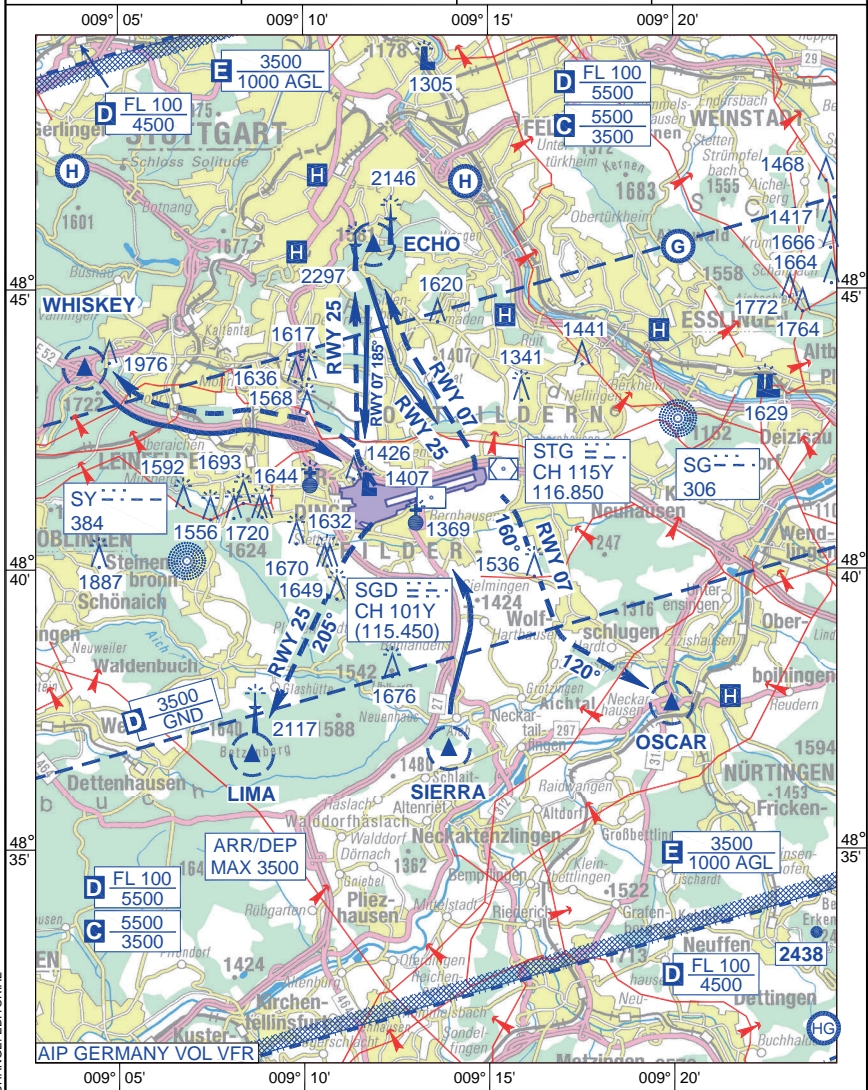


VISUAL OPERATION CHART

**ARR/DEP RWY 07/25 - 1
STUTTGART (EDDS)**

AD ELEV 1276	ARP 48°41.39'N 009°13.32'E	VAR 2° E (2012)	1 : 250 000
STUTTGART TOWER 378.350 119.050 118.800	STUTTGART GROUND 118.600	STUTTGART DELIVERY 121.900	km 0 1 2 3 4 5 NM 0 1 2
STUTTGART ATIS 126.125	LANGEN INFORMATION 128.950		



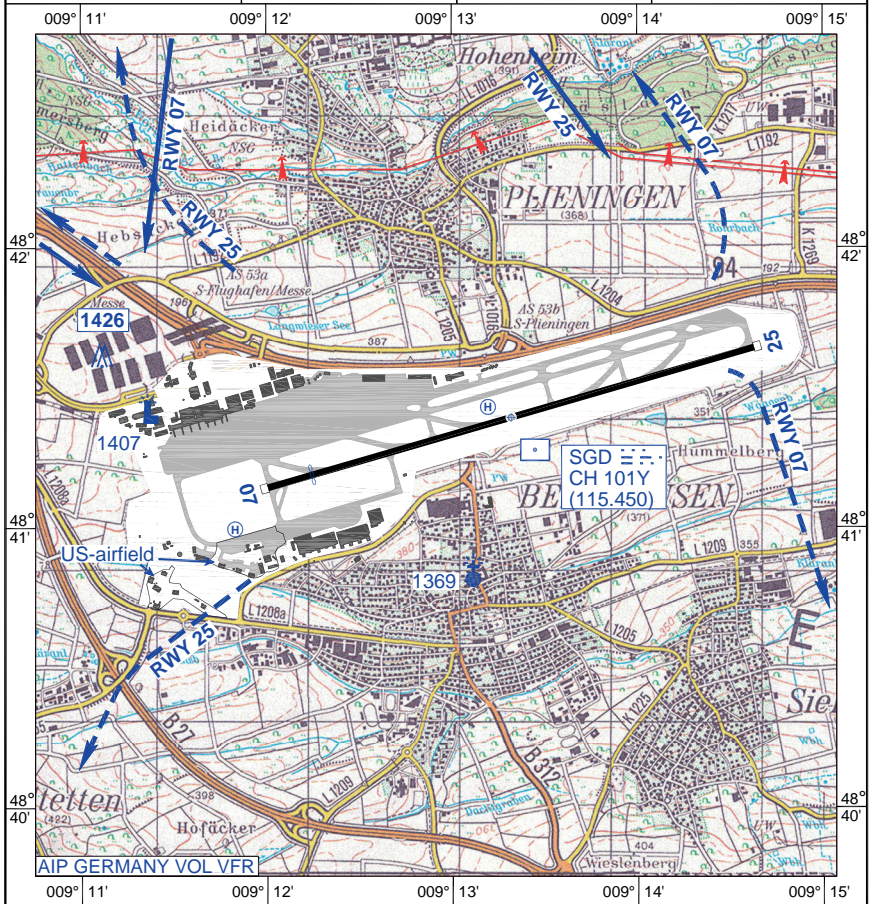
CHANGE: EDITORIAL

ZENTRIFLUTOP 07 JAN 2016

**NATIONAL
VISUAL OPERATION CHART**

**ARR/DEP RWY 07/25 - 2
STUTTART (EDDS)**

AD ELEV 1276	ARP 48°41.39'N 009°13.32'E	VAR 2° E (2012)	1 : 50 000
STUTTART TOWER 378.350 119.050 118.800	STUTTART GROUND 118.600	STUTTART DELIVERY 121.900	km 0 1 NM 0 0.5
STUTTART ATIS 126.125	LANGEN INFORMATION 128.950		



1. On VFR approaches radio contact shall be established with STUTTART TOWER 119.050 at least 5 MIN prior to the first CRP.
2. VFR approaches, departures with Jets and aeroplanes of more than 5.7 t shall apply IFR procedures. On approaches radio contact shall be established with Stuttgart APP at least 25 NM from the airport.
3. DANGER: Possible wake-turbulence.

CHANGE EDITORIAL

ZENTRFLUP 07 JAN 2016

ARR/DEP RWY 07/25 - 2

STUTTART (EDDS)

**NATIONAL
VISUAL OPERATION CHART**

**AERODROME CHART - 1
STUTTART (EDDS)**

AD ELEV 1276	ARP 48°41.39'N 009°13.32'E	VAR 2° E (2012)	
STUTTART TOWER 378.350 119.050 118.800	STUTTART GROUND 118.600	STUTTART DELIVERY 121.900	
STUTTART ATIS 126.125	LANGEN INFORMATION 128.950		

VAD REPORTING POINT LOCATIONS:

REPORTING POINT	UTMREF	LAT	LONG
ECHO	32U NV 1458 0117	48° 45.80000' N	009 11.90000' E
LIMA	32U NU 1057 8430	48° 36.70000' N	009 08.60000' E
OSCAR	32U NU 2444 8601	48° 37.60000' N	009 19.90000' E
SIERRA	32U NU 1708 8450	48° 36.80000' N	009 13.90000' E
WHISKEY	32U NU 0503 9707	48° 43.60000' N	009 04.10000' E

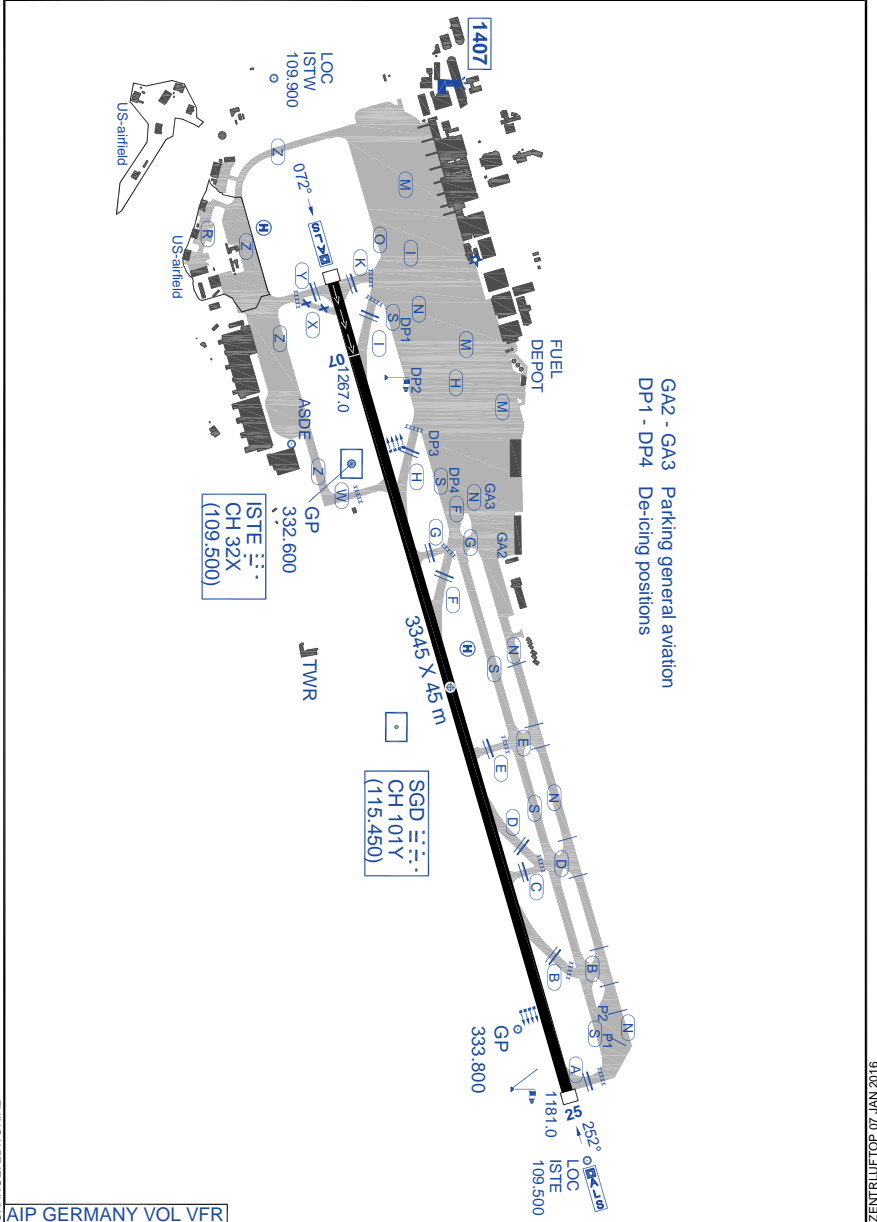
AD Layout see back side

[AIP GERMANY VOL VFR](#)

CHANGE: EDITORIAL

RWY	MAG BRG	PCN	TORA (m)	TODA (m)	ASDA (m)	LDA (m)	PAPI	THR COORDINATES	TDZE (ft)
07	072°	93R/CW/T	3345	3345	3345	3045	3.0°	48°41.18868'N 009°12.24263'E	1267.0
25	252°	93R/CW/T	3045	3045	3345	3345	3.0°	48°41.64093'N 009°14.62810'E	1181.0

ZENTR/LUFTOP 07 JAN 2016



CHANGE: EDITORIAL

AIP GERMANY VOL VFR

9102 NRT 20 2019

Approach and Departure Procedures for Police Helicopter Squadron based in Stuttgart (PHSt BW)

The BUSSARD 10 duty officer is responsible for the apron of PHSt BW, otherwise the DFS and BASE OPS responsibilities published shall apply.

Aircraft approaching PHSt BW

Normal case

Early notification about ETA and any fuel requests shall be given to BUSSARD 10 131.225. STUTT GART TOWER 119.050 shall be informed about landing on southern helipad on initial contact. When released by STUTT GART TOWER / GROUND contact BUSSARD 10 131.225.

Special cases

In case of parking on US-Apron, after release by STUTT GART TOWER contact Stuttgart BASE OPS 122.100. During OPS hrs the crew can be transferred to the PHSt BW and back. Refuelling by commercial aviation fuel providers can be requested by STUTT GART GROUND.

If, for other reasons (e.g. VIP flight) the ACFT shall be parked in the General Aviation area, approach the northern helipad, then follow the taxi instructions given by STUTT GART GROUND 118.600 after release contact BUSSARD 10 131.225 for any requirements.

Aircraft departing from the PHSt BW apron

IFR flights only: Start-up and enroute clearance shall be requested by STUTT GART DELIVERY 121.900.

Prior to start-up call BUSSARD 10 131.225 for essential information. After start-up check ATIS 126.125. For taxi clearance to southern helipad, contact STUTT GART GROUND 118.600. After release from STUTT GART GROUND, contact STUTT GART TOWER 118.800 for take-off clearance. All take-offs shall be performed from the helipad in RWY direction, unless otherwise instructed. No radio contact has to be established with Stuttgart BASE OPS.

Take-off and landing messages

O/R BUSSARD 10 will transmit landing and/or take-off messages to appropriate AIS unit.

NOISE ABATEMENT

All ACFT approaching PHSt BW apron shall maintain altitude 2300 ft MSL or higher, as long as possible. After departure climb to altitude 2300 ft MSL or higher, as soon as practicable, if weather permits.